



**Al Andalus**  
Electrical solutions



# Evora 1

## ALUP-101

### - APPLICATIONS

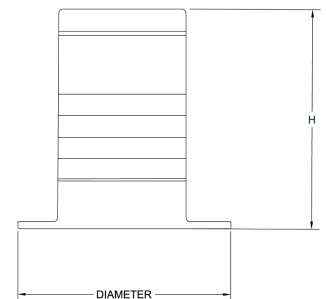
- Evora 1 LED Uplight uses COB LED and LED Driver for outdoor applications. such as:
- Landscape.
- Art and sculptures, or statues .
- Pathway and Walkway.
- Architectural Lighting.
- Outdoor Entertainment Areas.

### - FEATURES

- Light Source: COB LEDs.
- Stainless Steel body - Frosted Glass Diffuser
- Mounting Type: Floor Recessed Mounted.
- Finishing Color: Silver.
- LED Brand: Philips.

### - DIMENSIONS

Model	ALA-PY2207-SL-3W	ALA-PY2207-SL-6W	ALA-PY2207-SL-9W
∅	42 mm	52 mm	62 mm
H	73 mm	80 mm	90 mm





Al Andalus  
Electrical solutions

# Evora 1

## ALA-PY2207-SL

### -TECHNICAL SPECIFICATIONS

Model	ALA-PY2207-SL-3W	ALA-PY2207-SL-6W	ALA-PY2207-SL-9W
LED Power	3 W	6 W	9 W
Luminous Efficacy	105 lm/W	100 lm/W	99.6 lm/W
Luminous flux	315 lm	600 lm	897 lm
CCT	3000 K		
Beam Angle	10°*45°		
CRI (Ra)	>80		
IP	66		
LED Lifespan	> 50.000 hrs		

### - LIGHT DISTRIBUTION DIAGRAM

