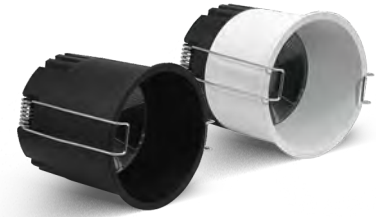




**Al Andalus**  
Electrical solutions



# Valencia 4

## ALDL104

### - Applications

Valencia 4 Downlights are a type of lighting fixture that directs light downward. They are versatile and can be used in a variety of applications to provide both functional and decorative illumination.

Applications include:

- Offices.
- museum.
- shoppingmall.
- Art Galleries.
- Residential Lighting.

### - Features

**LED:**

- COB [Philips].

**HOUSING:**

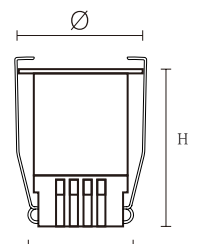
- [Die Cast Alumnuim]
- Finshing color[White-Black].

**DRIVER:**

- Constant Current Driver.

### - Dimensions

Model	ALDL104-7	ALDL104-10	ALDL104-15
∅	62 mm	72 mm	82 mm
H	78 mm	78 mm	78 mm
Cut Size	55 mm	65 mm	75 mm





Al Andalus  
Electrical solutions

# Valencia 4

## ALDL104

### -Tech.Specification

Model	ALDL104-7	ALDL104-10	ALDL104-15
Power	7 W	10 W	15 W
Power factor	> 0.95		
Luminous Efficacy	100 lm/W		
Luminous flux	700 lm	1000 lm	1500 lm
CCT	3000K - 4000k		
Beam Angle	24°/38°		
CRI (Ra)	>80		
IP	20		